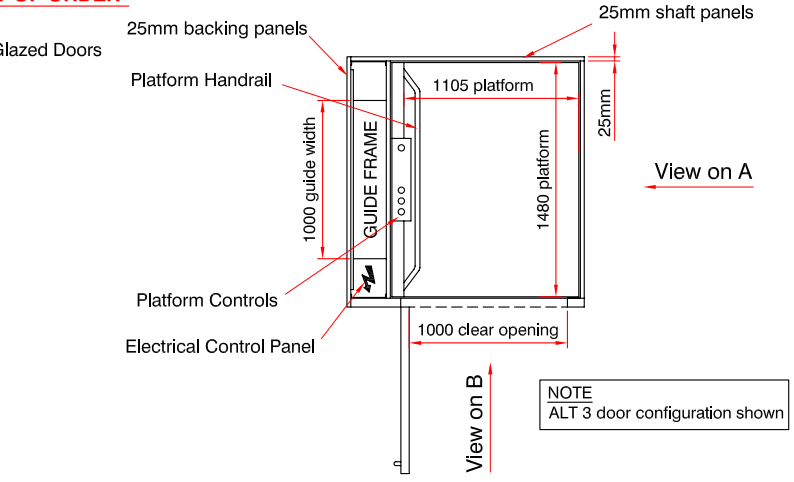
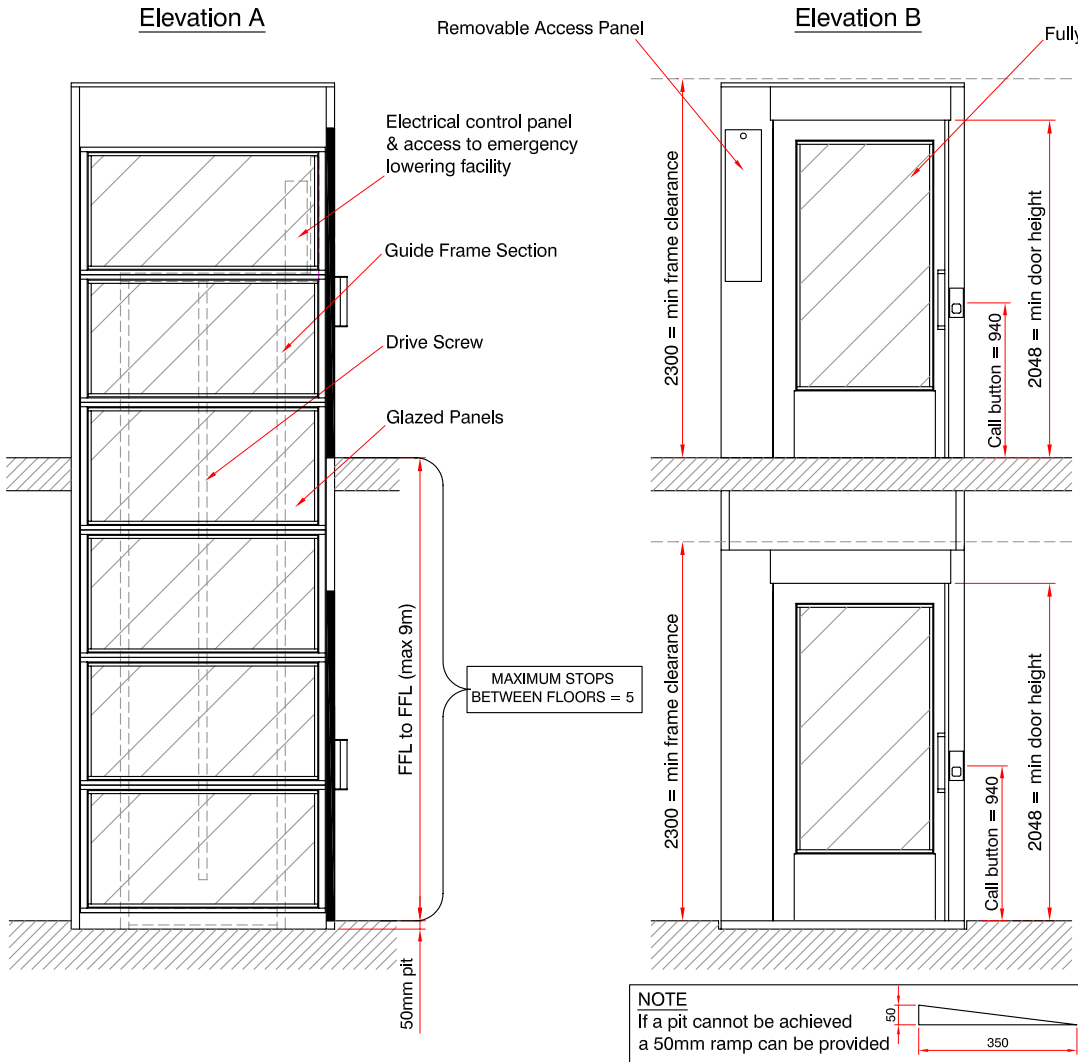
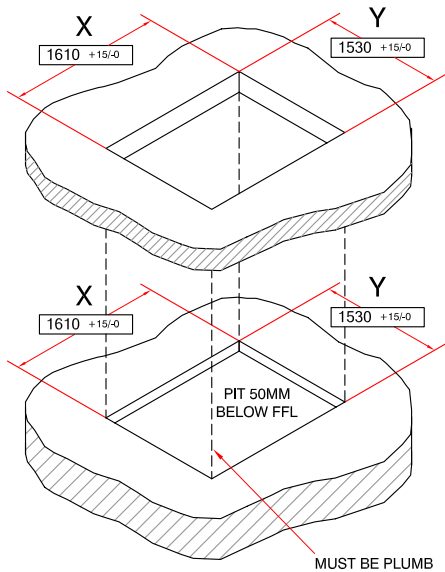


**NOTE - THIS DRAWING IS FOR GUIDANCE ONLY AND MUST NOT BE USED AS A PROPER WORKING DRAWING. FOR ENQUIRIES ABOUT THE LIFT PLEASE CONTACT THE Platform Lift Co - TEL 01256 896000  
PLEASE NOTE THAT APERTURE SIZES DO VARY, SITE SPECIFIC DRAWINGS AVAILABLE UPON RECEIPT OF ORDER**



NOTE  
ALT 3 door configuration shown

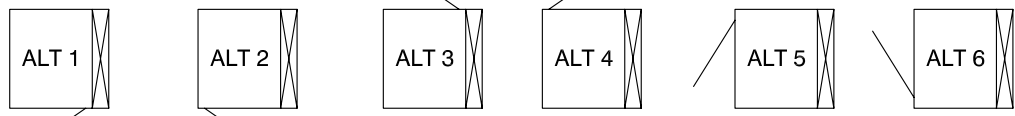


**Vertical Lift Platform Specification**

- Load: 400kg / 5 persons
- Drive: Direct driven screw and nut
- Speed: 0.15m / sec
- Travel: Maximum travel up to 9m
- Stops: Max 5 stops
- Motor: 2.2kw
- Power: 415v 3ph 50Hz 10A (1ph optional)
- Colour: RAL 9010 as standard (alternative RAL colours available)
- Panels: 25mm thick double skin panels
- Panel Infill: Polystyrene Infill

**Builders work Required**

- 1 - Provide a trimmed pit / shaft aperture to the dimensions shown, pit must be smooth level and structurally sound
- 2 - Provide a power supply complete with a lockable isolator
- 3 - Provide secure thresholds for door fixing



**Door Configurations Available**  
(Guides can go on any side)

<p>Apsley Barns, Apsley, Near Andover, Hants, SP11 6NA Tel - 01256 896000 Fax - 01256 896900 E-mail - info@platformliftco.co.uk website - www.platformliftco.co.uk</p>	<b>TITLE</b> 'A' Type Vertical Platform Lift - 400kg	
	<b>DWG NO.</b> 400 - FULLY GLAZED	<b>REV</b> A
<b>SCALE</b> NTS	<b>DATE</b> 28/09/06	<b>DRAWN</b> RH