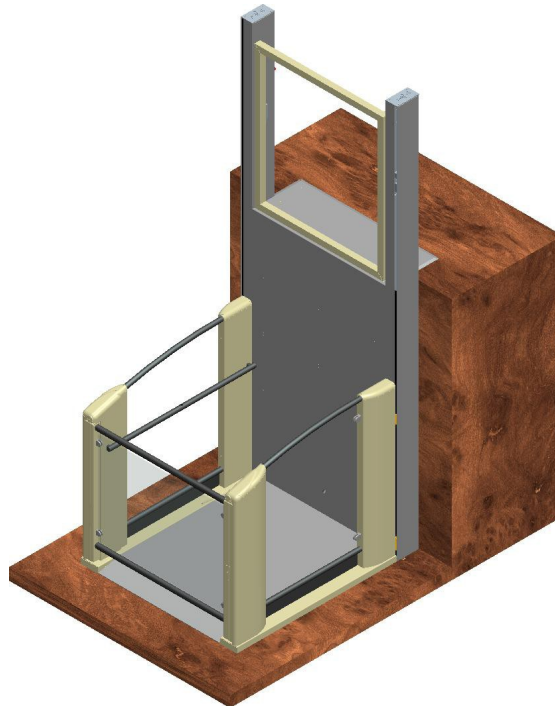


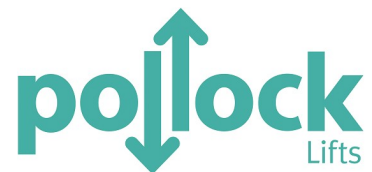
INDEPENDENCE STEPLIFT 2m SPECIFYING GUIDE



POLLOCKLIFTS
22 WOODBURN ROAD
BT38 8PX Carrickfergus
United Kingdom

Tel: 0044 28 9336 8167
0044 17 8581 9666
Midlands Branch

Fax: 0044 28 9336 7846
info@pollocklifts.co.uk
www.pollocklifts.co.uk



CONTENTS

INDEPENDENCE STEPLIFT 2m PLATFORM LIFT	3
INDEPENDENCE STEPLIFT 2m TECHNICAL SPECIFICATION	4
INDEPENDENCE STEPLIFT 2m OPTIONS	5
INDEPENDENCE STEPLIFT 2m DIMENSION DETAILS	6
PLATFORM with Integrated Ramp Site Preparation Details	7

INDEPENDENCE STEPLIFT 2m PLATFORM LIFT

The Independence Steplift 2m is a hydraulically operated platform lift capable of raising a maximum load of 500kg up to 2m between fixed floors.

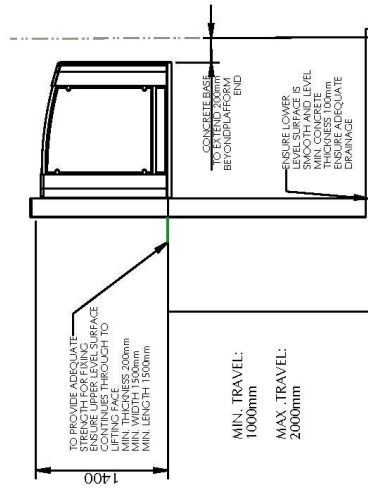
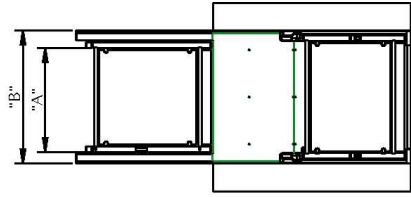
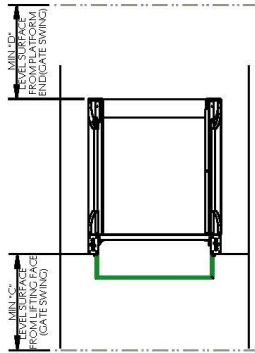
The design and manufacture of this product is in accordance with BS6440, ISO/9386-1 and BS8300. The Independence Steplift 2m is suitable for use by person(s) with impaired mobility in both public and domestic locations.

Special consideration has been given to the location and dimensions of control allowing safe and unaided use by person(s) with impaired mobility whether ambulant or in a wheelchair. A control station is provided on the platform and at the upper and lower floor levels. Various key switching options are available.

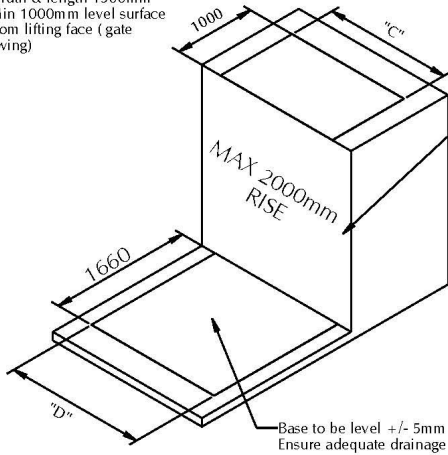
INDEPENDENCE STEPLIFT 2m	
Technical Specification	
Application range	Ambulant and Wheelchair users Internal & External Locations
Maximum Safe Working Load	500 kg
maximum Travel	2000mm
Rated Speed	0.1 m/s
Power Supply	220/240V 50/60 Hz 13A single phase (max)
Electrical Requirements	Dedicated RCD Protected Supply
Low voltage operating system. The lift has battery), the lift should never be left disconnected from the mains supply for long periods	24VDC
Duty Cycle	10 cycles per hour or 40 cycles in any 24 hour period whichever is the greater
Hydraulic Oil Grade	Tellus 32
Lift Operating Temperature Range	-10°C to +40°C
Safety	Safety surface protect against entrapment below the platform. Hose burst valve in base of ram.
Lifting Mechanism	Direct Acting Hydraulic Drive System
Design and Manufacturing Standard	CE Mark ISO/9386-1:1999(E) BS 6440 OBS83
Power Pack IP Rating	IP43X
Control Station IP Rating	IP53X

Standard Lift	Std.	Std. Option	Special Order
Integrated Ramp	X		
Anti Slip Flooring	X		
Emergency Stop	X		
Alarm	X		
Stainless Steel handrails and platform gate. Powder coated guides.	X		
Silicon Acrylic infill to both gates and platform side	X		
Additional Product Options			
Powered Gate (Upper Level)			X
Powered Gate (Lower level)			X
Remote Control		X	
Key isolate (at one of landing master on/off)	X		

	"A"	"B"	"C"	"D"
800W	800	1110	750	1000
900W	900	1210	850	1100
1100W	1100	1410	1050	1300

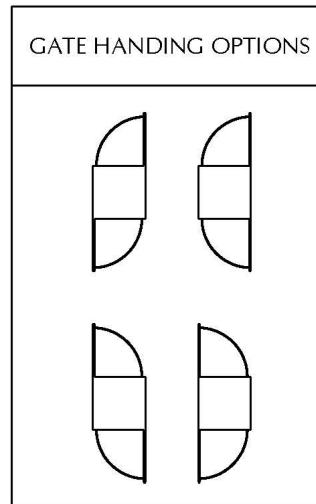
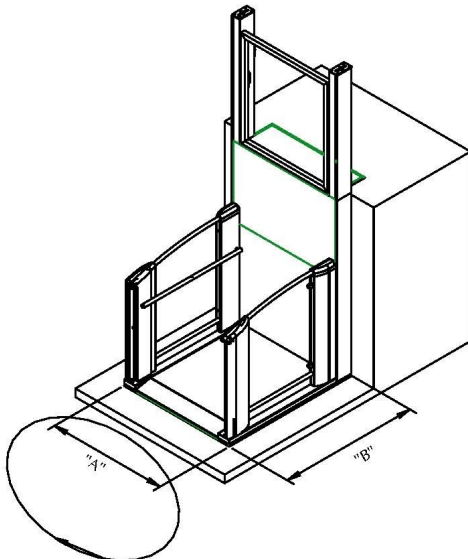


Min thickness 200mm
 Min width & length 1500mm
 Min 1000mm level surface
 from lifting face (gate
 swing)



Lift Size	"A"	"B"	"C"	"D"
800W	1110	1645	1150	1150
900W	1210	1645	1250	1250
1100W	1410	1645	1450	1450

Lift must NOT be located over external services
 e.g. mains water stop tap, manhole etc.



1500mm x 1500mm Circulation Space or straight access
 route of 900mm wide. Min level surface from front
 edge of base (gate swing) see previous drawing.