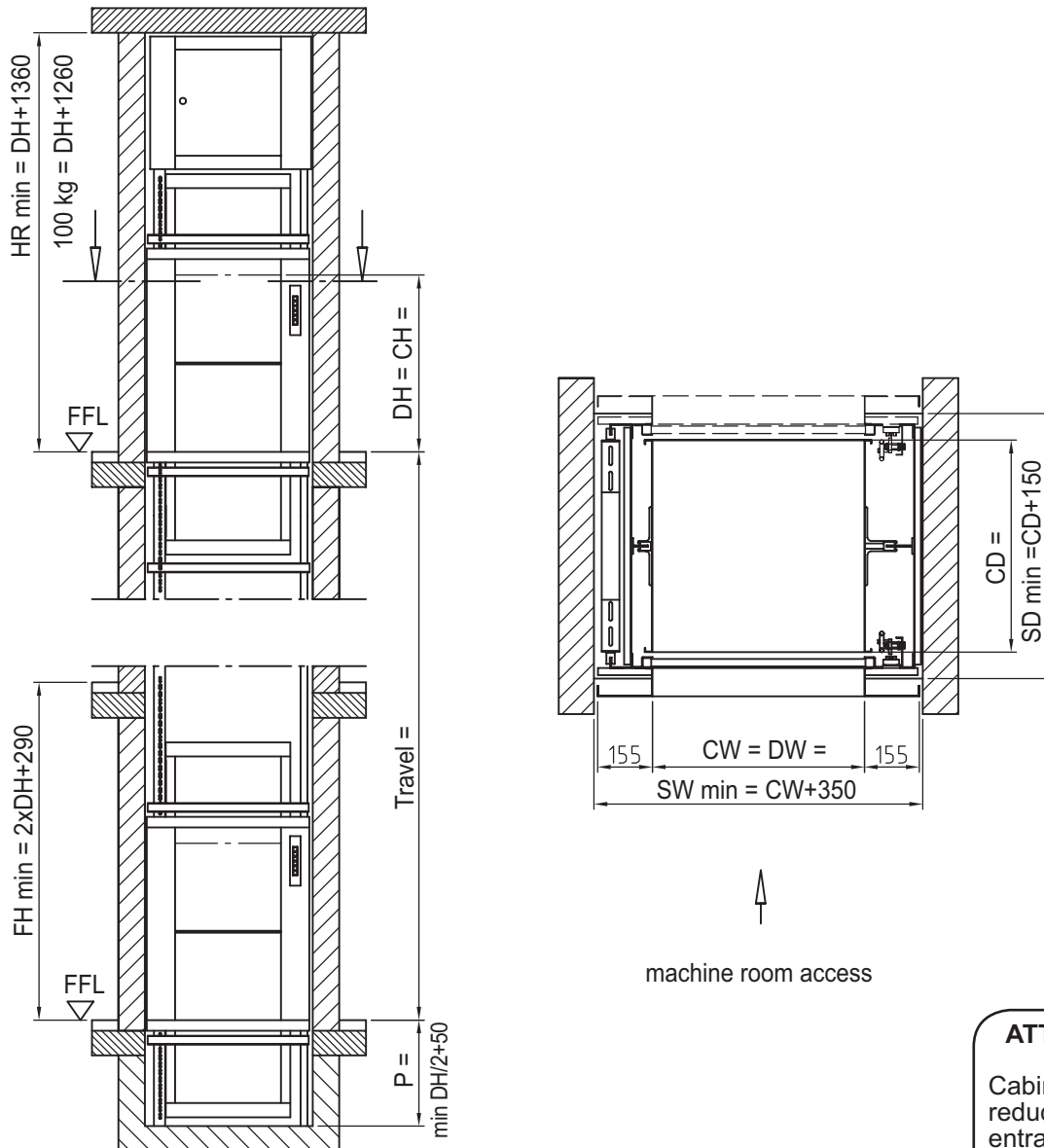


SKG - ISO - C



Kleingüteraufzug ISO - C Schiebetüren bodenbündig
Service lift ISO - C Bi parting doors serving at floor level
Monte-charge ISO - C Portes à guillotine ras-du-sol

Well dimensions are absolute min. plumbed dimensions



ATTENTION:

Cabin protection reduces clear entrance openings resp. shaft sizes (see part 10)

Accessible rooms underneath shaft inadmissible

Cabin width and -depth available in increments of 50 mm
 Cabin height available in increments of 100 mm

- | | | | |
|-----|---|--|---|
| CW | = | cabin width | min. 500 - max. 1000 mm |
| CD | = | cabin depth | min. 600 - max. 1000 mm |
| CH | = | cabin height | min. 800 - max. 1200 mm |
| DW | = | door width | = Cabin width |
| DH | = | door height | = Cabin height |
| P | = | pit | = min. DH/2+50 |
| SW | = | Shaft width | = plumbed min. dimensions |
| SD | = | Shaft depth | = plumbed min. dimensions |
| HR | = | Headroom | = clear height of top floor FFL - underside ceiling |
| FFL | = | finished floor level | |
| FH | = | Floor to floor height on landing doors in line | |



Prices and specification see back side



- Servicelift

ISO - C

• Bi-part. doors serv. at floor level • Loading front and rear • Machine above • **WITHOUT SAFETY GEAR**

Capacity	Cabin floor area	v	2S/2L	3S/3L	4S/4L	5S/5L	6S/6L	S>6 prices on request
100 kg	≤ 1 m ²	0,27 m/s	5.796,- € C.01.100.10.02	7.164,- € C.01.100.10.03	8.560,- € C.01.100.10.04	10.118,- € C.01.100.10.05	11.997,- € C.01.100.10.06	
200 kg	≤ 1 m ²	0,25 m/s	6.065,- € C.01.200.10.02	7.434,- € C.01.200.10.03	8.829,- € C.01.200.10.04	10.386,- € C.01.200.10.05	12.265,- € C.01.200.10.06	
300 kg	≤ 1 m ²	0,25 m/s	6.091,- € C.01.300.10.02	7.460,- € C.01.300.10.03	8.857,- € C.01.300.10.04	10.413,- € C.01.300.10.05	12.292,- € C.01.300.10.06	

Prices are EUR - gross prices

Standard complies to EN 81-3 + EU-MRL 98/37/EWG

3 m of travel included for each stop

add. travel 107,- €/m

Through loading condition extra-price 376,- €

add. landing 591,- € each

S/L = No. of stops / landings

v = Speed

Q = Capacity

ATTENTION:

Concerning to EN-81-3 part 8.5 Car entrance

a load protection can be necessary

extra charge see Options part 7

Standard equipment at no extra-charge

Structure

- Steel structure, made of cold rolled galvanized special profiles
- pre-installed with T-guides T 45 x 5 + plastic trunking in 2 m segments

Cabin

- Cant-off system made of galvanized steel, adjustable guide shoes on both sides
- removable shelf
- Compensation device on suspension ropes / chains

Bi-parting doors

- manual operated bi-parting doors made of galvanized steel in accordance to DIN 18092, production controlled by TÜV-authorities
- with side frames made of galvanized steel according to drawing
- door locks type-tested by TÜV-authorities

Machine room door

- single hinged door (DW ≥ 800 mm = double hinged), with sash lock, both hinging sides available
- with side frames made of galvanized steel according to drawing

Drive unit

- Drive unit with standard motor IP 54 disc brake and hand wheel, 3 x 400 V /50 Hz. according to IEC
- Q = 50 - 100 kg: sheave Ø 300 diameter for 2 ropes Ø 6 mm
- Q > 100 - 300 kg: 2 chain wheels for 2 chains 5/8 x 3/8" DIN 8187

Counter weight or balancing weight

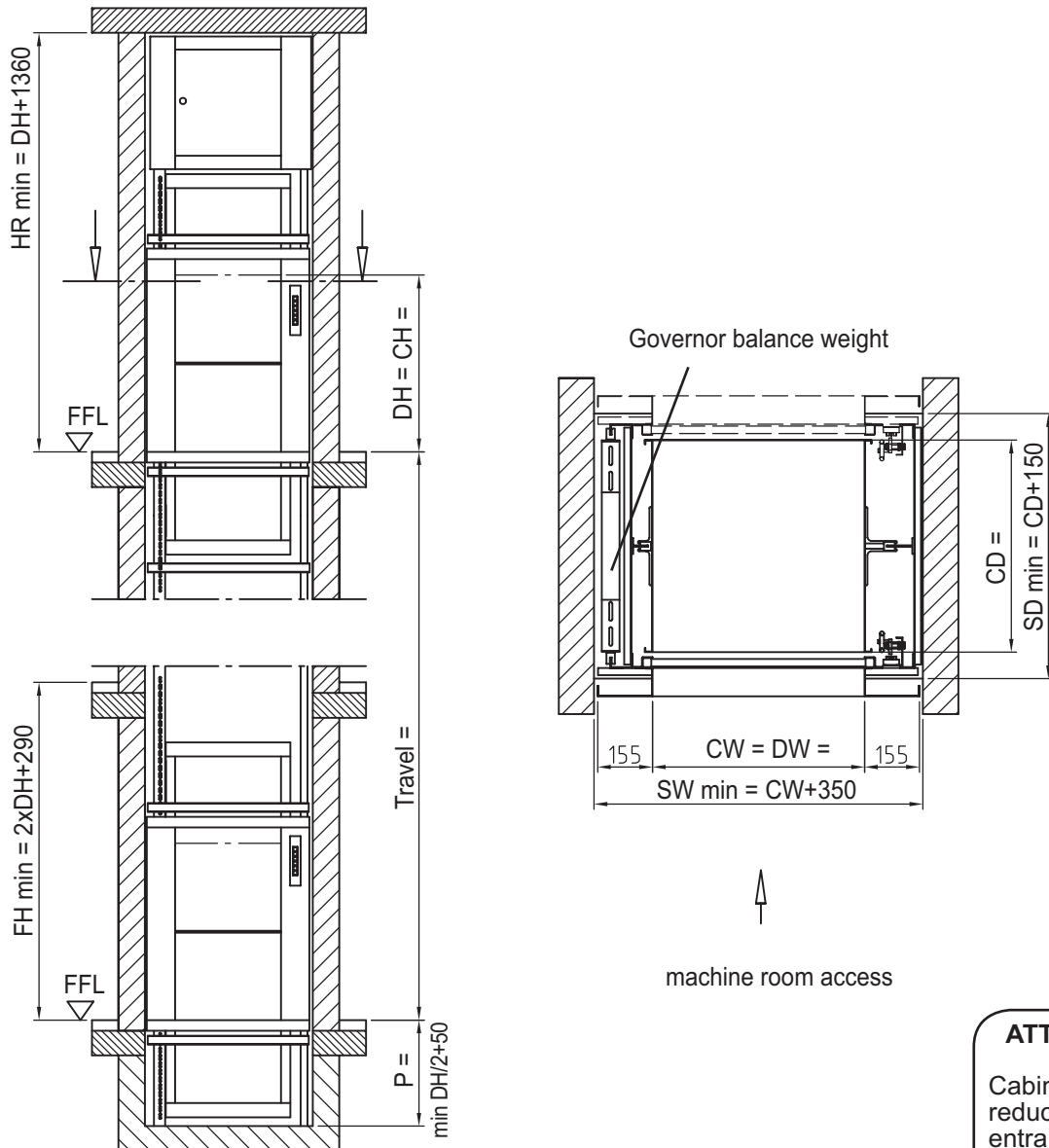
- galvanized frame construction with iron in fills

Controller

- call and send control with 24 V, safety circuit 230 V
- pre-wired with plugs
- adjustable and time-limited despatch delay device (1-5 s)
- acoustic arrival signal
- position indicator on each entrance
- thermic motor protection as main switch pre-wired on control panel
- machine room light with socket



Well dimensions are absolute min. plumbed dimensions



ATTENTION:

Cabin protection reduces clear entrance openings resp. shaft sizes (see part 10)

Shaft floor to be constructed according to layout drawing

Cabin width and -depth available in increments of 50 mm

Cabin height available in increments of 100 mm

- | | | | |
|-----|---|--|---|
| CW | = | cabin width | min. 600 - max. 1000 mm |
| CD | = | cabin depth | min. 700 - max. 1000 mm |
| CH | = | cabin height | min. 800 - max. 1200 mm |
| DW | = | door width | = Cabin width |
| DH | = | door height | = Cabin height |
| P | = | pit | = min. DH/2+50 |
| SW | = | Shaft width | = plumbed min. dimensions |
| SD | = | Shaft depth | = plumbed min. dimensions |
| HR | = | Headroom | = clear height of top floor FFL - underside ceiling |
| FFL | = | finished floor level | |
| FH | = | Floor to floor height on landing doors in line | |



Prices and specification see back side



- Servicelift

ISO - C

• Bi-part. doors serv. at floor level • Loading front and rear • Machine above • **WITH SAFETY GEAR**

Capacity	Cabin floor area	v	2S/2L	3S/3L	4S/4L	5S/5L	6S/6L	S>6 prices on request
100 kg	≤ 1 m ²	0,15 m/s	9.252,- € C.02.100.10.02	10.621,- € C.02.100.10.03	12.016,- € C.02.100.10.04	13.573,- € C.02.100.10.05	15.452,- € C.02.100.10.06	
200 kg	≤ 1 m ²	0,15 m/s	9.681,- € C.02.200.10.02	11.050,- € C.02.200.10.03	12.446,- € C.02.200.10.04	14.003,- € C.02.200.10.05	15.881,- € C.02.200.10.06	
300 kg	≤ 1 m ²	0,15 m/s	9.788,- € C.02.300.10.02	11.157,- € C.02.300.10.03	12.553,- € C.02.300.10.04	14.110,- € C.02.300.10.05	15.988,- € C.02.300.10.06	

Prices are EUR - gross prices

Standard complies to EN 81-3 + EU-MRL 98/37/EWG

3 m of travel included for each stop

add. travel 247,- €/m

Through loading condition extra-price 376,- €

add. landing 591,- € each

S/L = No. of stops / landings

v = Speed

Q = Capacity

ATTENTION:

Concerning to EN-81-3 part 8.5 Car entrance a load protection can be necessary extra charge see Options part 7

Standard equipment at no extra-charge

Structure

- Steel structure, made of cold rolled galvanized special profiles
- pre-installed with T-guides T 45 x 5 + plastic trunking in 2 m segments
- Buffer 80/80

Cabin

- Cant-off system made of galvanized steel, adjustable guide shoes on both sides
- removable shelf
- Compensation device on suspension ropes / chains
- Safety gear, type tested by TÜV - authorities

Bi-parting doors

- manual operated bi-parting doors made of galvanized steel in accordance to DIN 18092, production controlled by TÜV-authorities
- with side frames made of galvanized steel according to drawing
- door locks type-tested by TÜV-authorities

Machine room door

- single hinged door (DW ≥ 800 mm = double hinged), with sash lock, both hinging sides available
- with side frames made of galvanized steel according to drawing

Drive unit

- Drive unit with standard motor IP 54 disc brake and hand wheel, 3 x 400 V /50 Hz. according to IEC
- Drum 240 diameter for 2 ropes 5/6 mm diameter suspension 2:1

Controller

- call and send control with 24 V, safety circuit 230 V
- pre-wired with plugs
- adjustable and time-limited despatch delay device (1-5 s)
- acoustic arrival signal
- position indicator on each entrance
- thermic motor protection as main switch pre-wired on control panel
- machine room light with socket

Note. If travel is more than 4m/pls check drum will fit in the shaft

