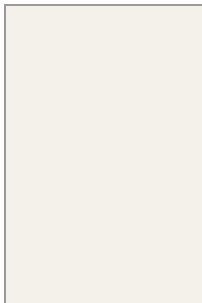
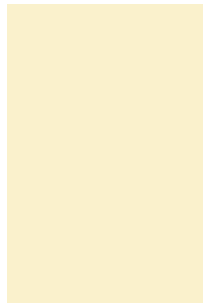


A GUIDE TO LIFT FINISHES

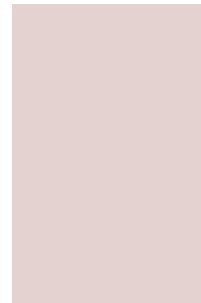
Laminate Wall Finishes



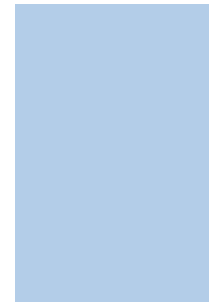
Colour 411



Colour 466



Colour 811



Colour 858



Colour 836



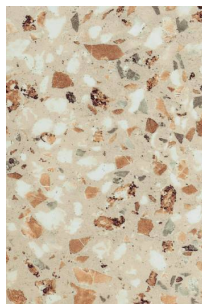
Colour 893



Colour 898



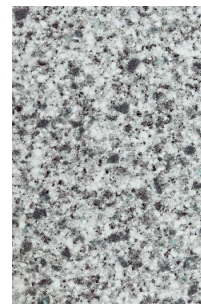
Colour 879



I Finti 968



I Finti 970



I Finti 988



Fiber 1032



Legni 1647



Legni 1667



Legni 600

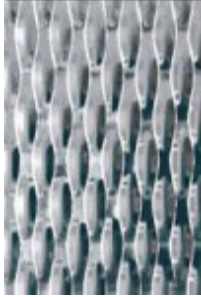


Legni 313

- Colour range is subject to availability
- Increased cost variations may apply
- Visit – www.abet-laminati.it for the full range of Print HPL laminates

A GUIDE TO LIFT FINISHES

Stainless Steel Wall Finishes



5WL



Checkers



Cambridge



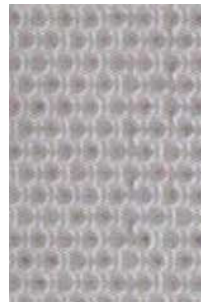
Scotchbrite



Hairline



Satin



Lino



Mirror

SkinPlate Wall Finishes



P1 - white



P2 - light grey



P3 - beige



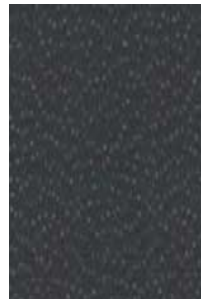
P4 - red



P5 - blue



P7 - wood grain



P8 - dark grey



P12 - st/st look alike

A GUIDE TO LIFT FINISHES

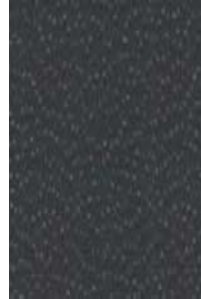
Car Steel Profile Finishes



P1 - white



P2 - light grey



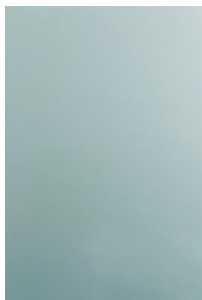
P8 - dark grey



P12 - st/st look alike



Scotchbrite S/S



Mirror S/S

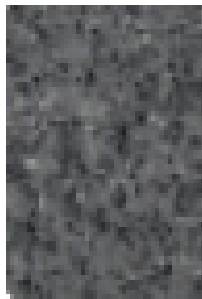


Hairline



Satin

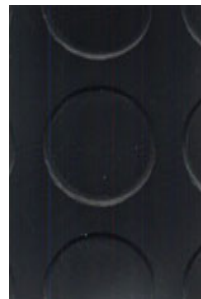
Floor Finishes



V1



V2 - grey rubber studs



V3 - black rubber studs



Lino 3053



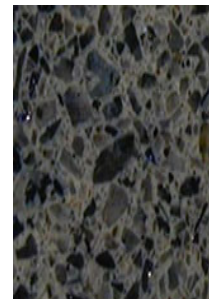
Lino 3048



Lino 3038



Granite 602



Granite 633